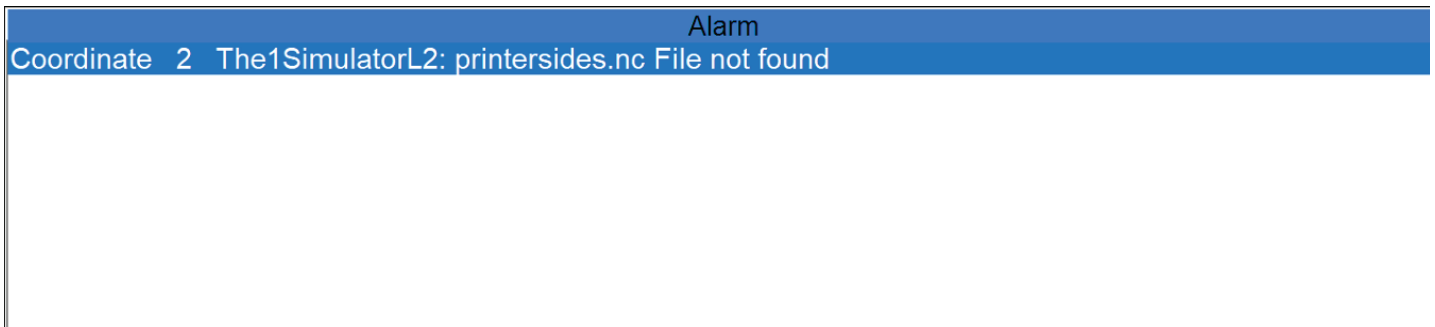
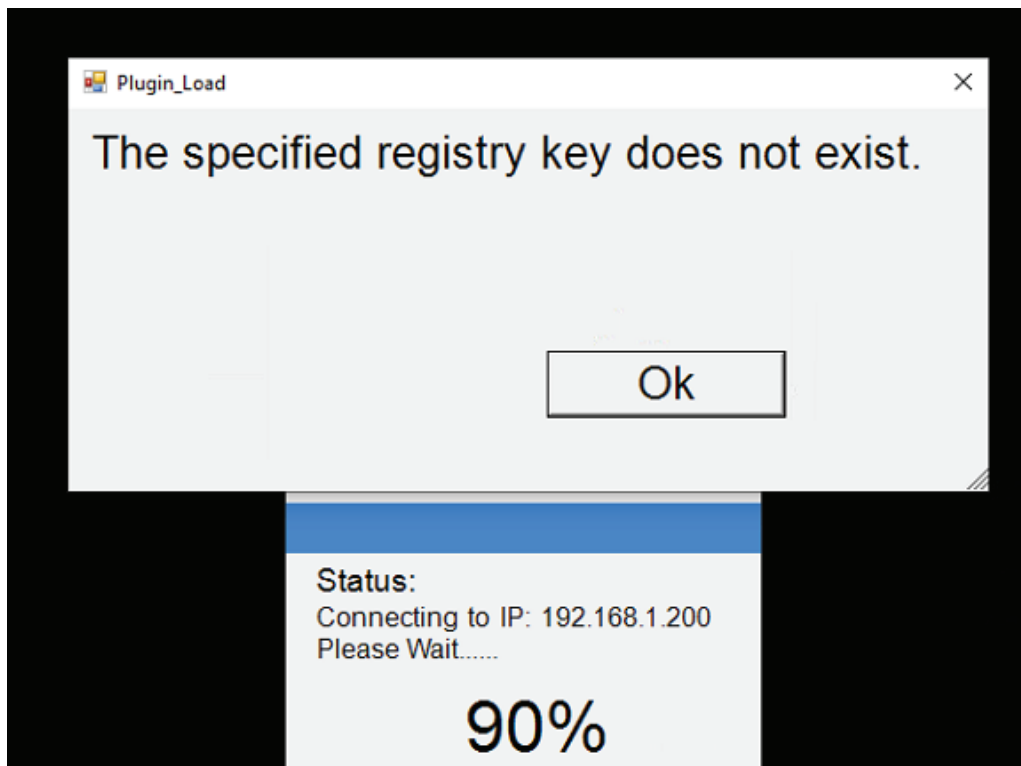


TROUBLESHOOTING

ERROR ENCOUNTERED:

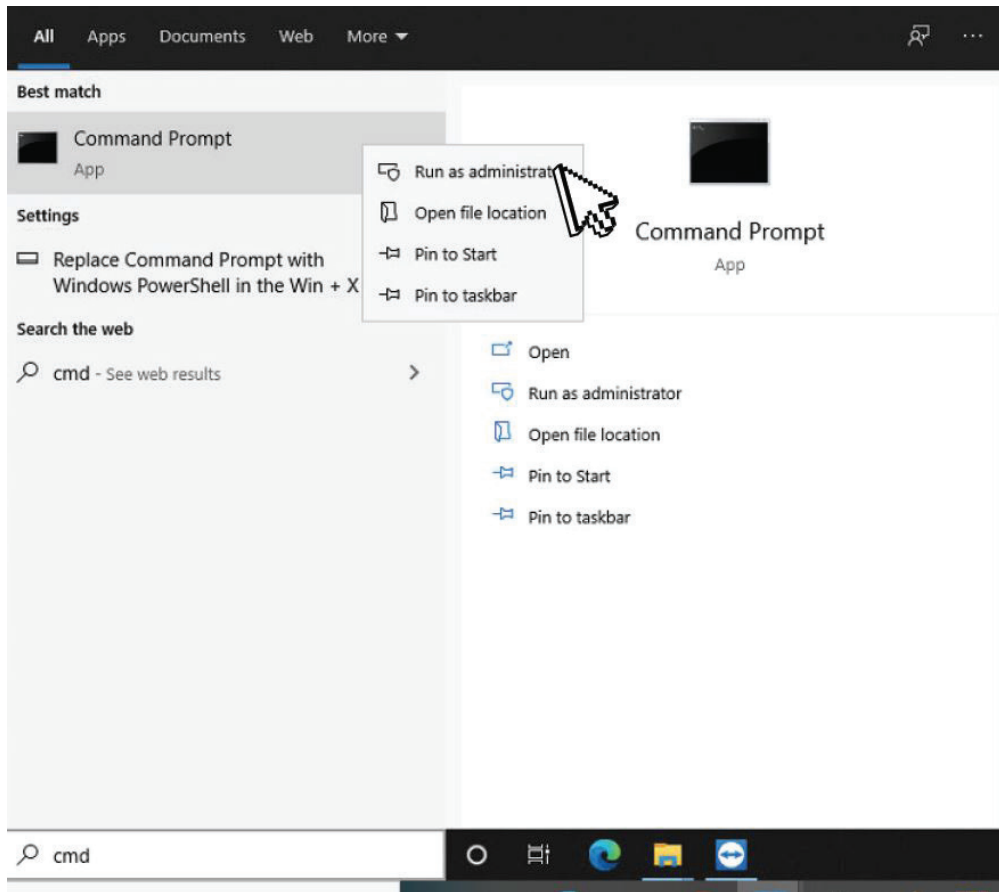
These errors occur whenever your Windows updates without carrying your old permission settings.



THE SOLUTION:

You will need to revert to your old permission settings to fix this issue by following these steps below. There are about 20 steps which will take you about 5 minutes to complete.

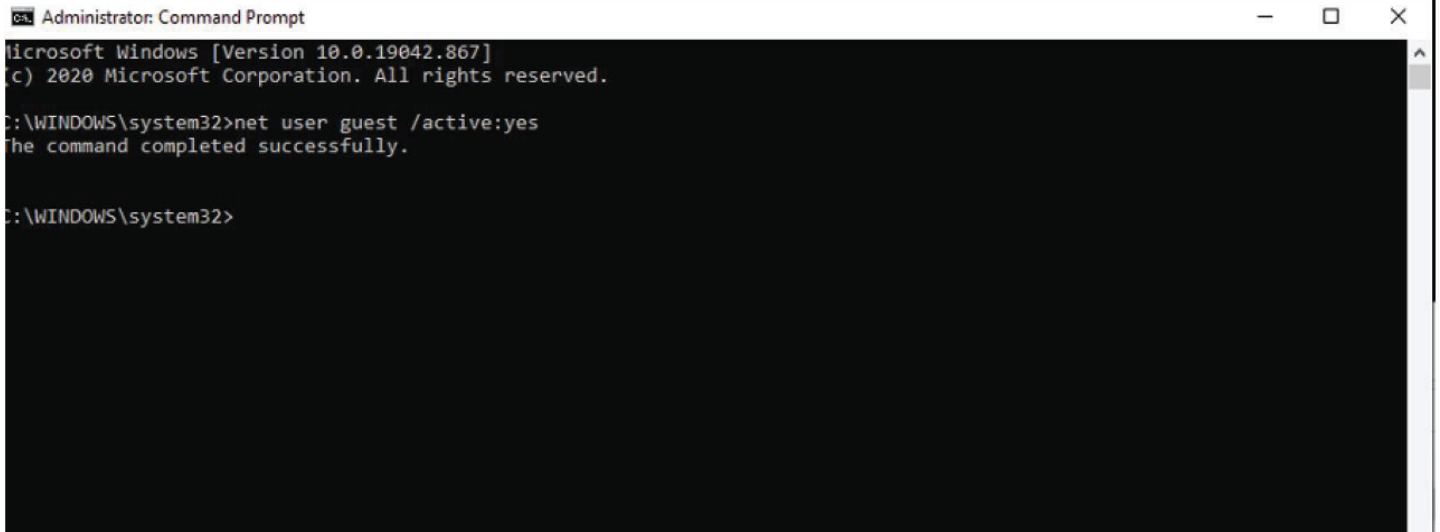
1. Search for the Command Prompt App by typing "cmd" on your Taskbar. Then right-click on the app and run as administrator.



2. The Command Prompt window will open. After, type: "net user guest /active:yes", and then hit [ENTER].

```
Administrator: Command Prompt
Microsoft Windows [Version 10.0.19042.867]
(c) 2020 Microsoft Corporation. All rights reserved.
C:\WINDOWS\system32>net user guest /active:yes
```

3. After you see this success message, close the Command Prompt window.

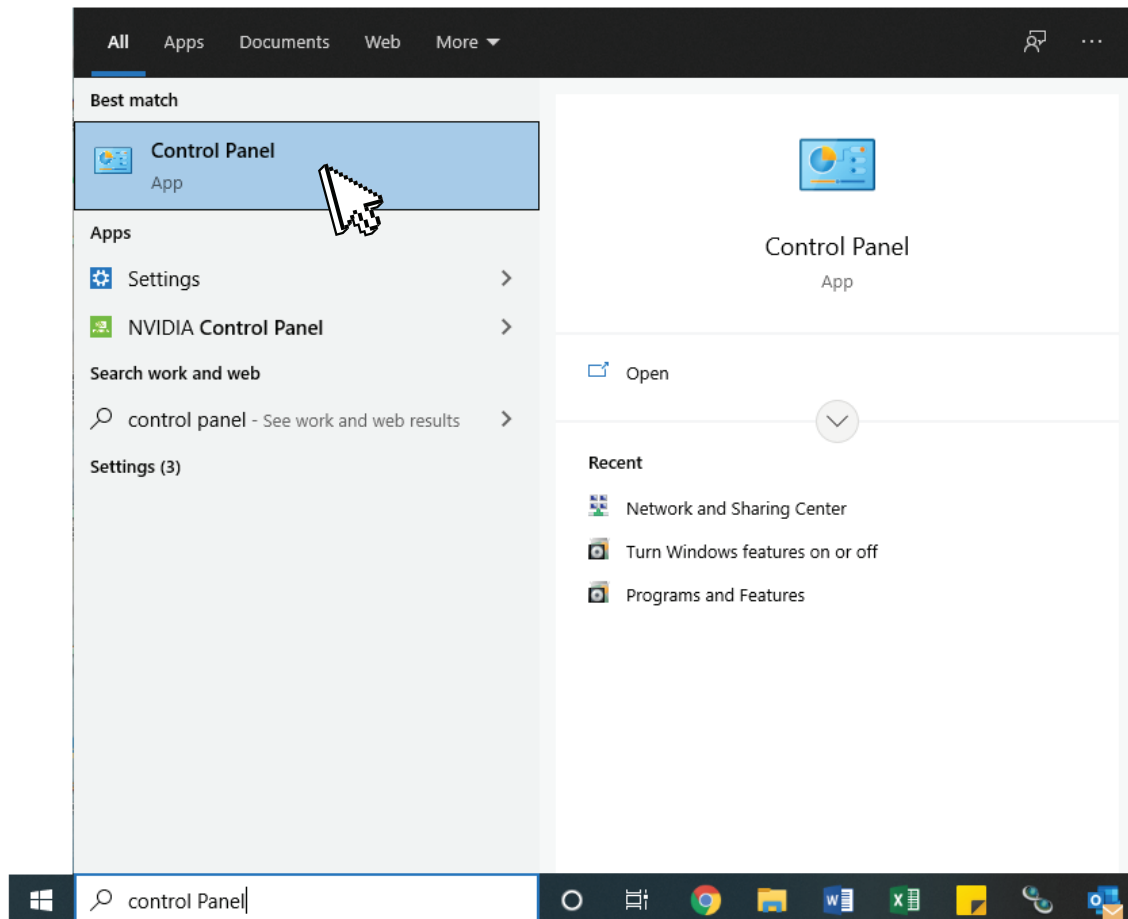


```
Administrator: Command Prompt
Microsoft Windows [Version 10.0.19042.867]
(c) 2020 Microsoft Corporation. All rights reserved.

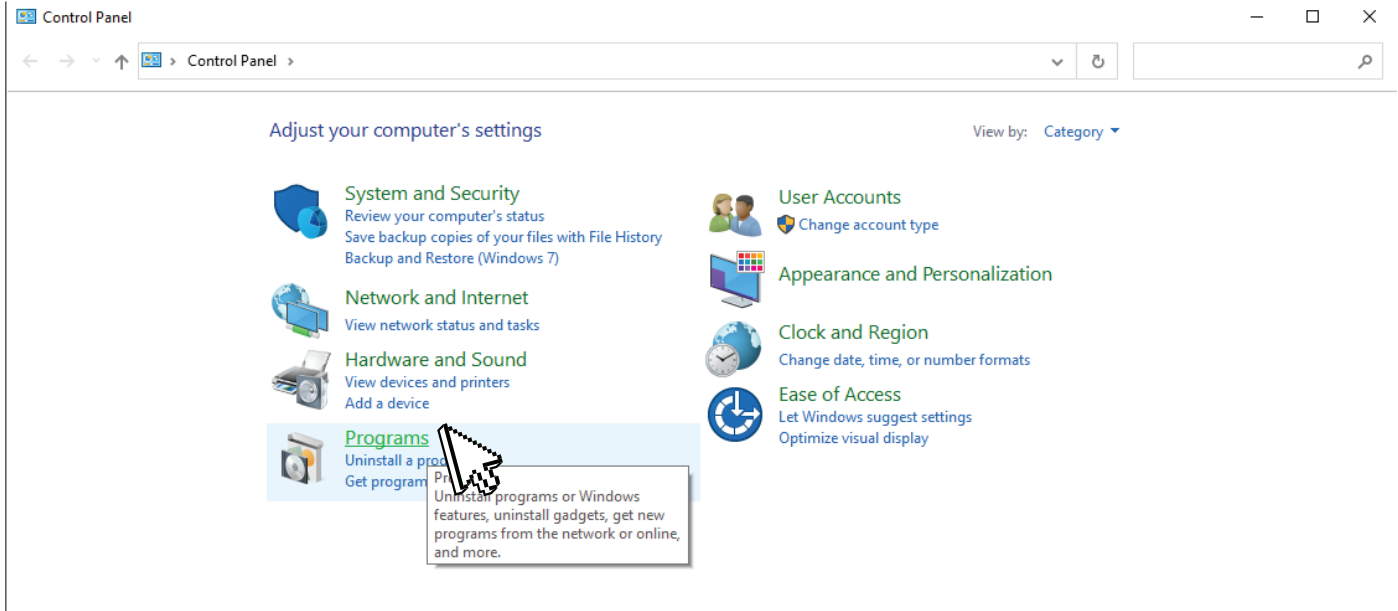
C:\WINDOWS\system32>net user guest /active:yes
The command completed successfully.

C:\WINDOWS\system32>
```

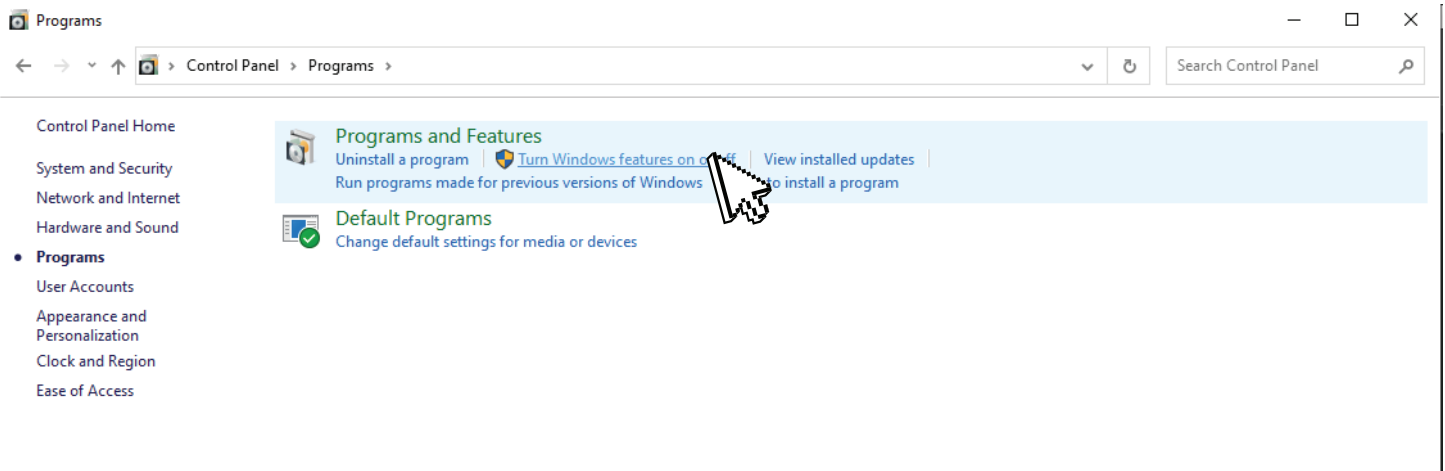
4. Next, on your Taskbar again, search for "Control Panel" and click on it.



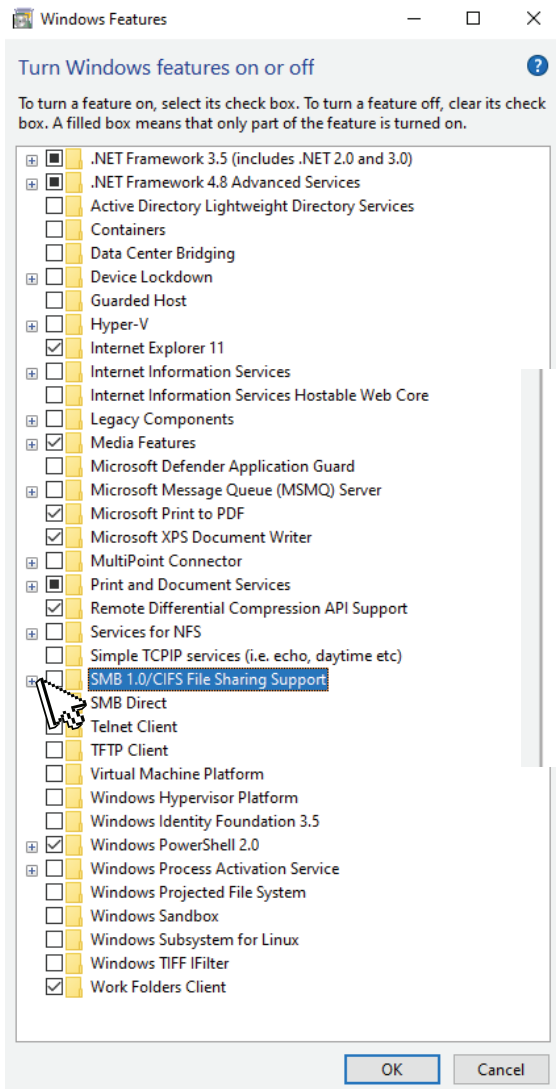
5. On the Control Panel window, click [Programs].



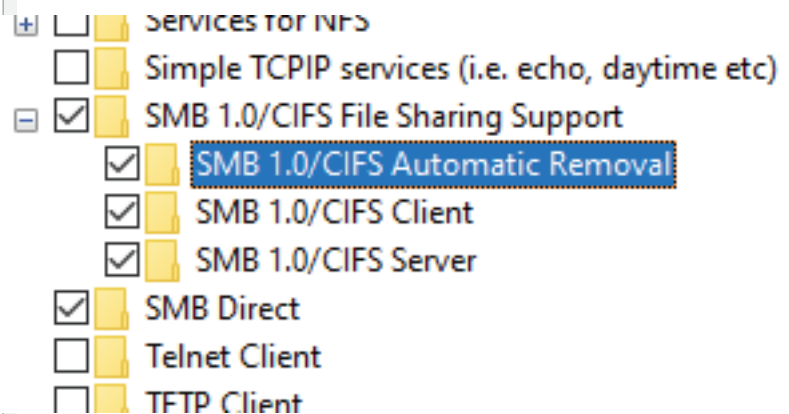
6. Under Programs and Features, click [Turn Windows features on or off].



7. The Windows Features window will appear. Scroll down until you see the “SMB 1.0/CIFS Files Sharing Support” folder. Click on the [+] sign to expand it.

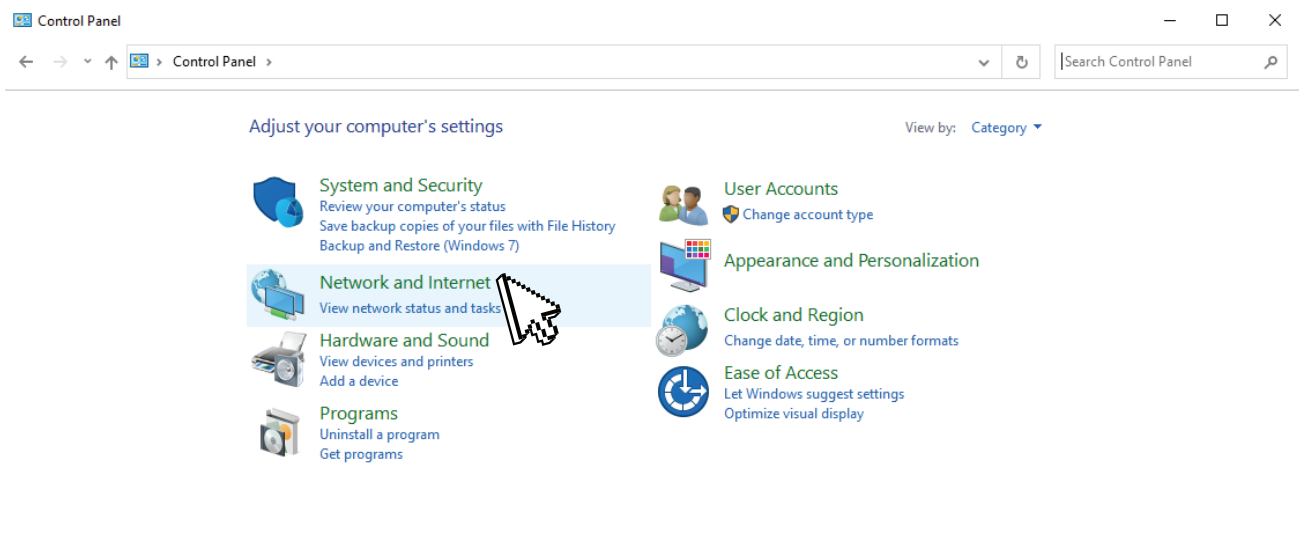


You will then see 3 sub folders as shown below. Make sure you check all 3 subfolders then click [OK].

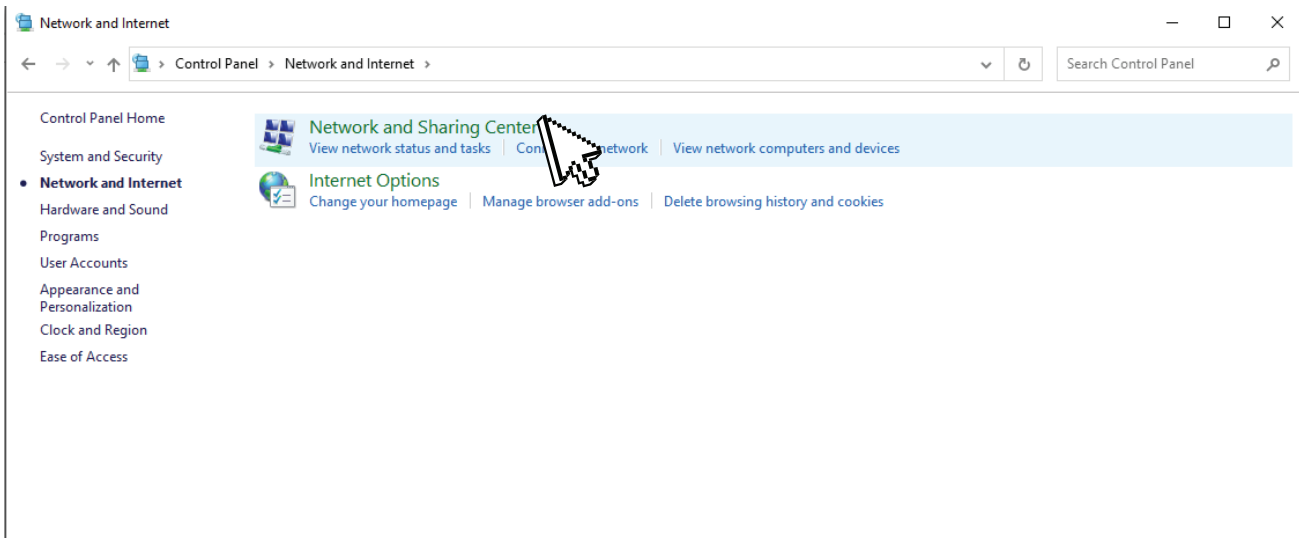


Give your PC a few seconds to search for required files and to apply changes. After, Windows will ask you to restart your computer. You can restart later after completing all the steps. So, for now, click [Don't restart].

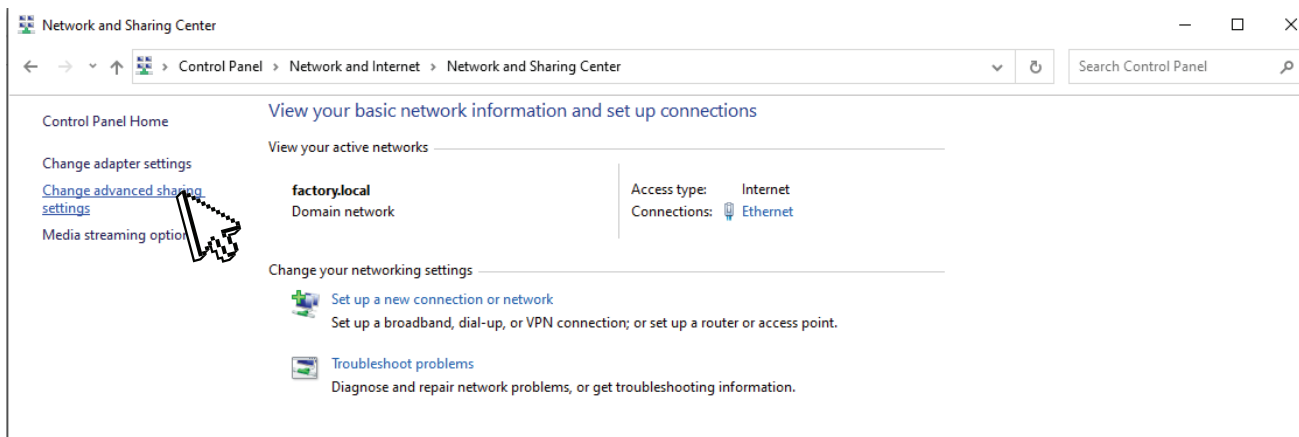
8. Back on the Control Panel, click on [Network and Internet].



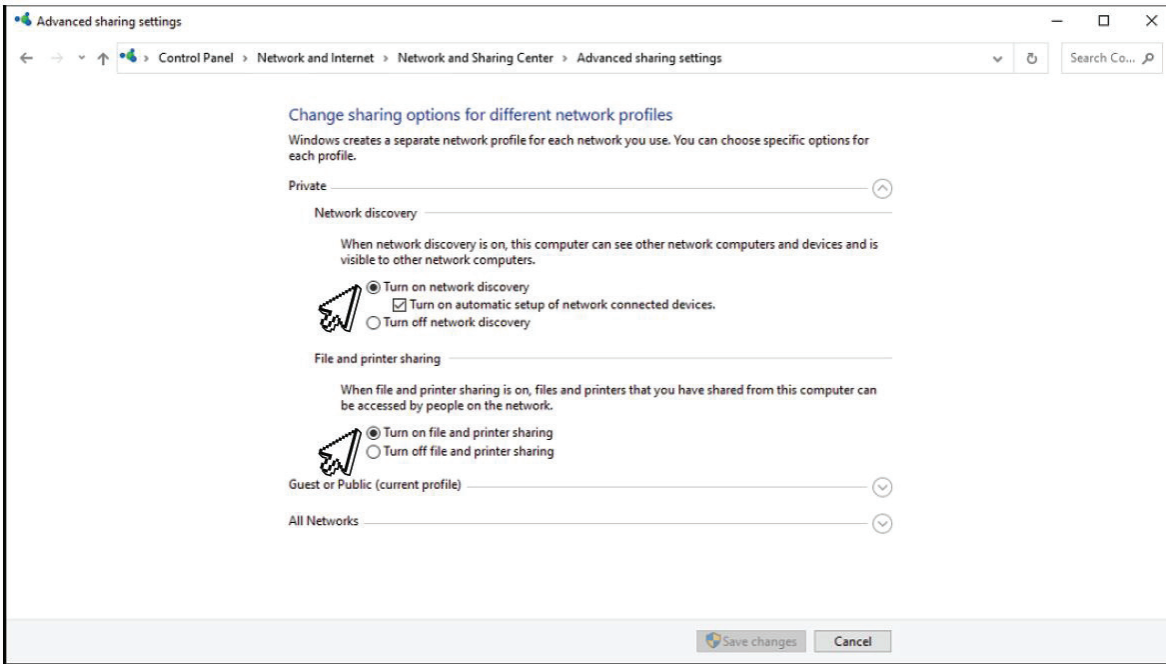
9. After, click on [Network and Sharing Center].



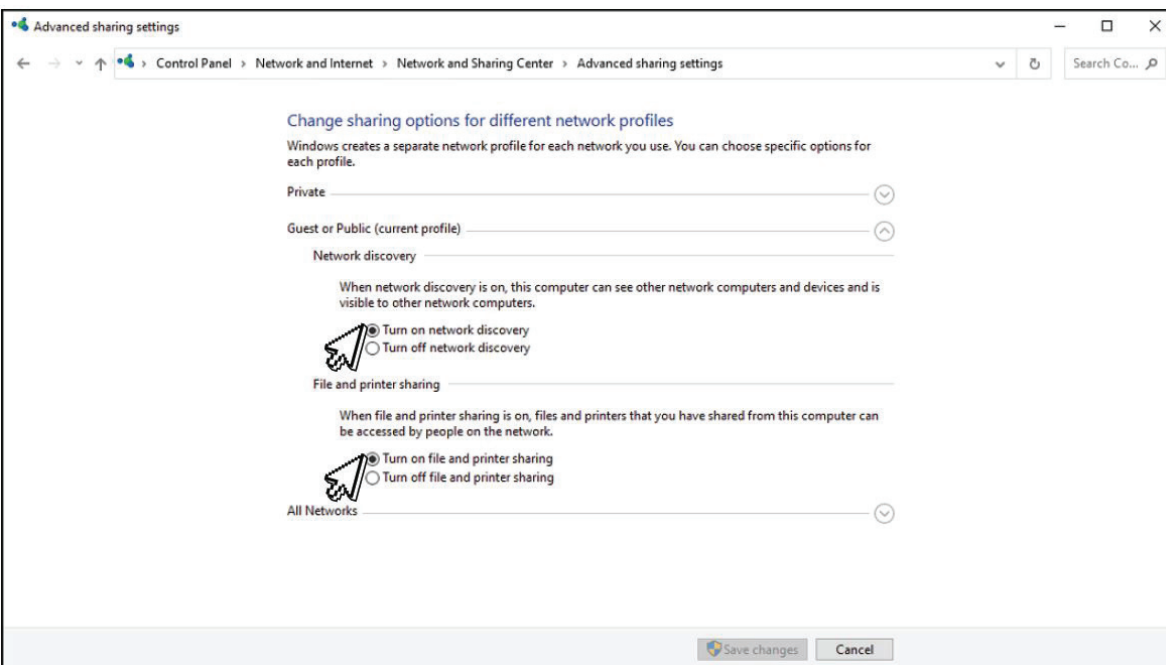
10. And then on the left sidebar, click on [Change advanced sharing settings].



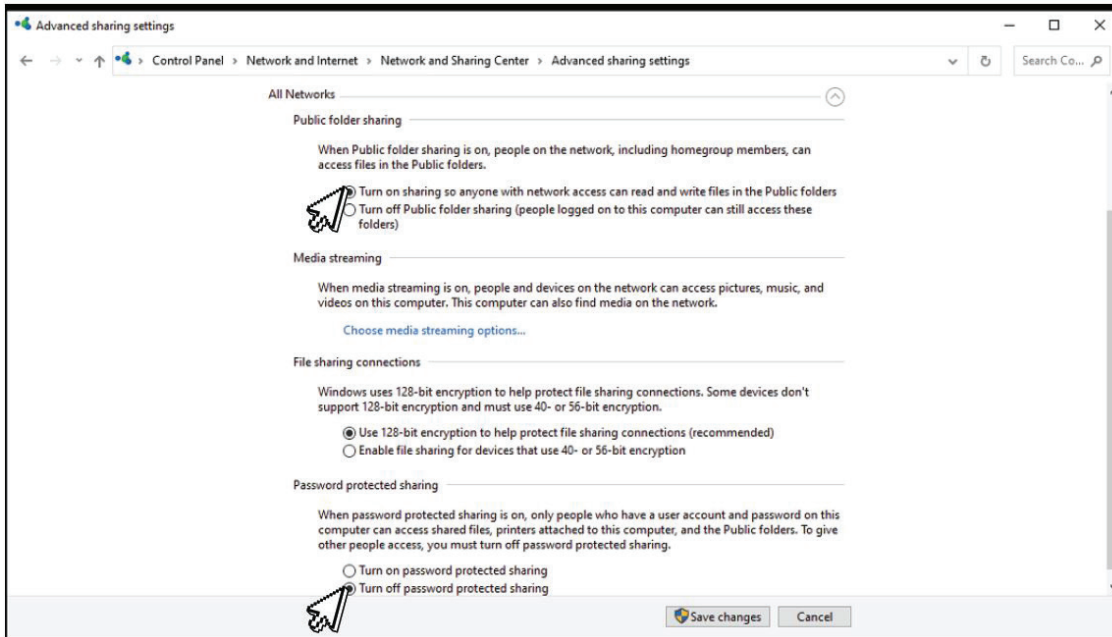
11. For each network profile, you would then need to turn on all options.



Turn on for Private



Turn on for Guest or Public

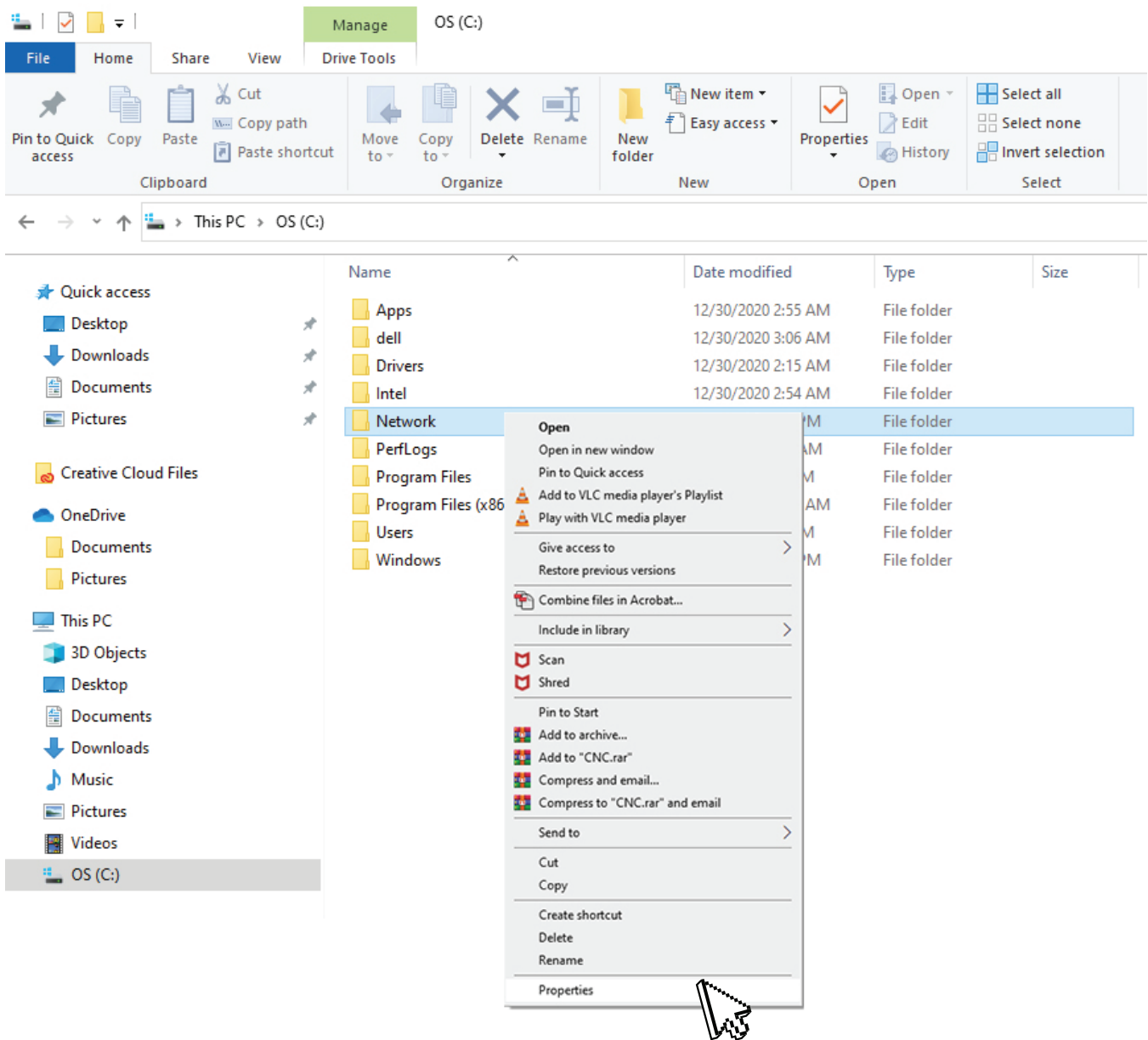


Turn on for
Public folder sharing

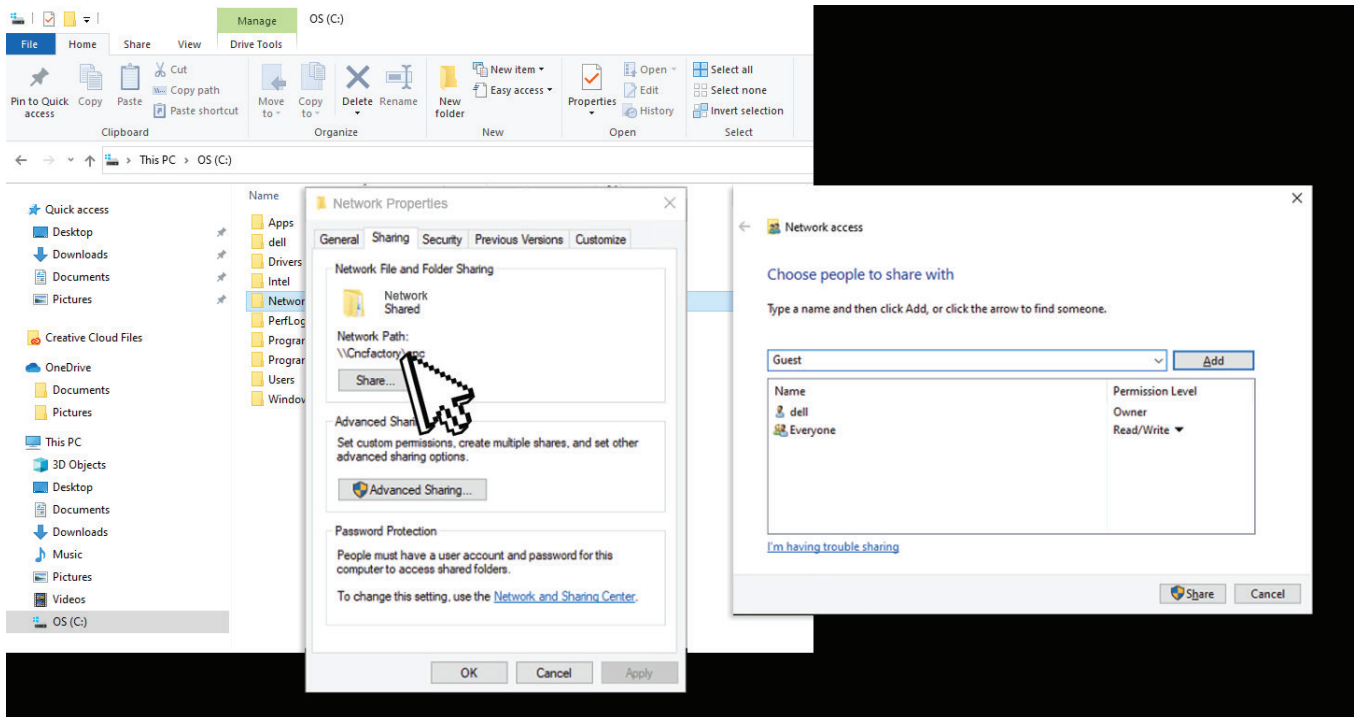
However, Password
protected sharing
should be turned OFF.

Click [Save Changes].

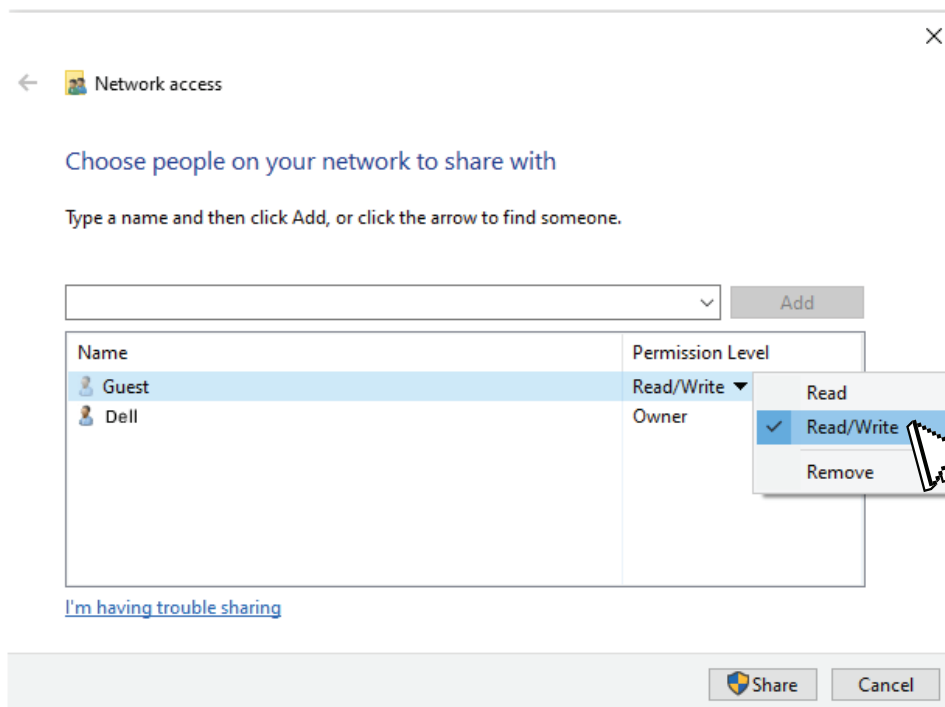
12. Next, go to your C Drive and look for the “Network” folder. Right-click on it and, at the bottom, select [Properties].



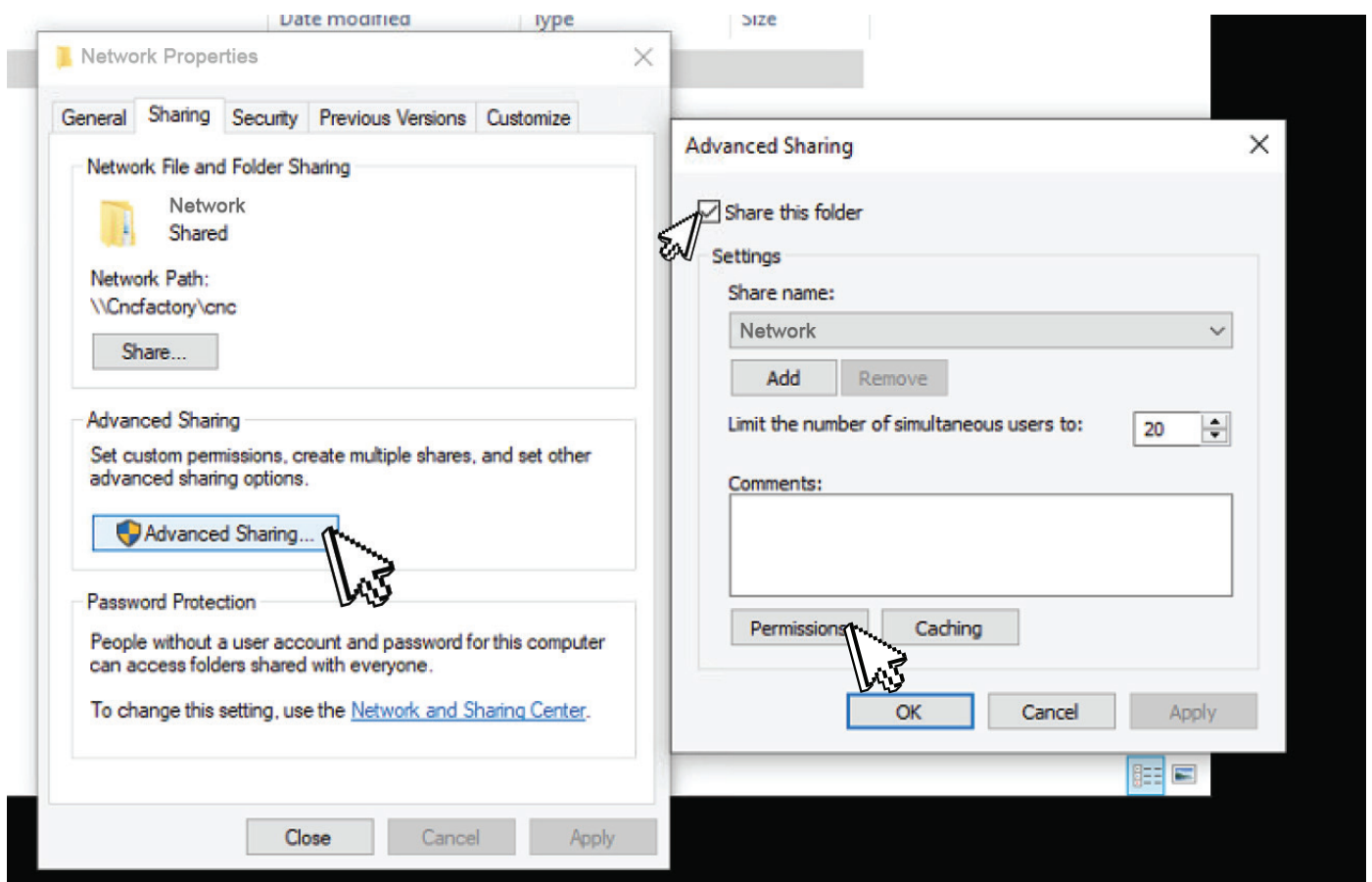
14. The Network Properties window will appear. Go to the “Sharing” Tab and click on [Share]. Another pop-up window will appear like the one on the right below. Make sure there is a Guest account. If not, you can create one by typing “guest” on the field, and then clicking on [Add].



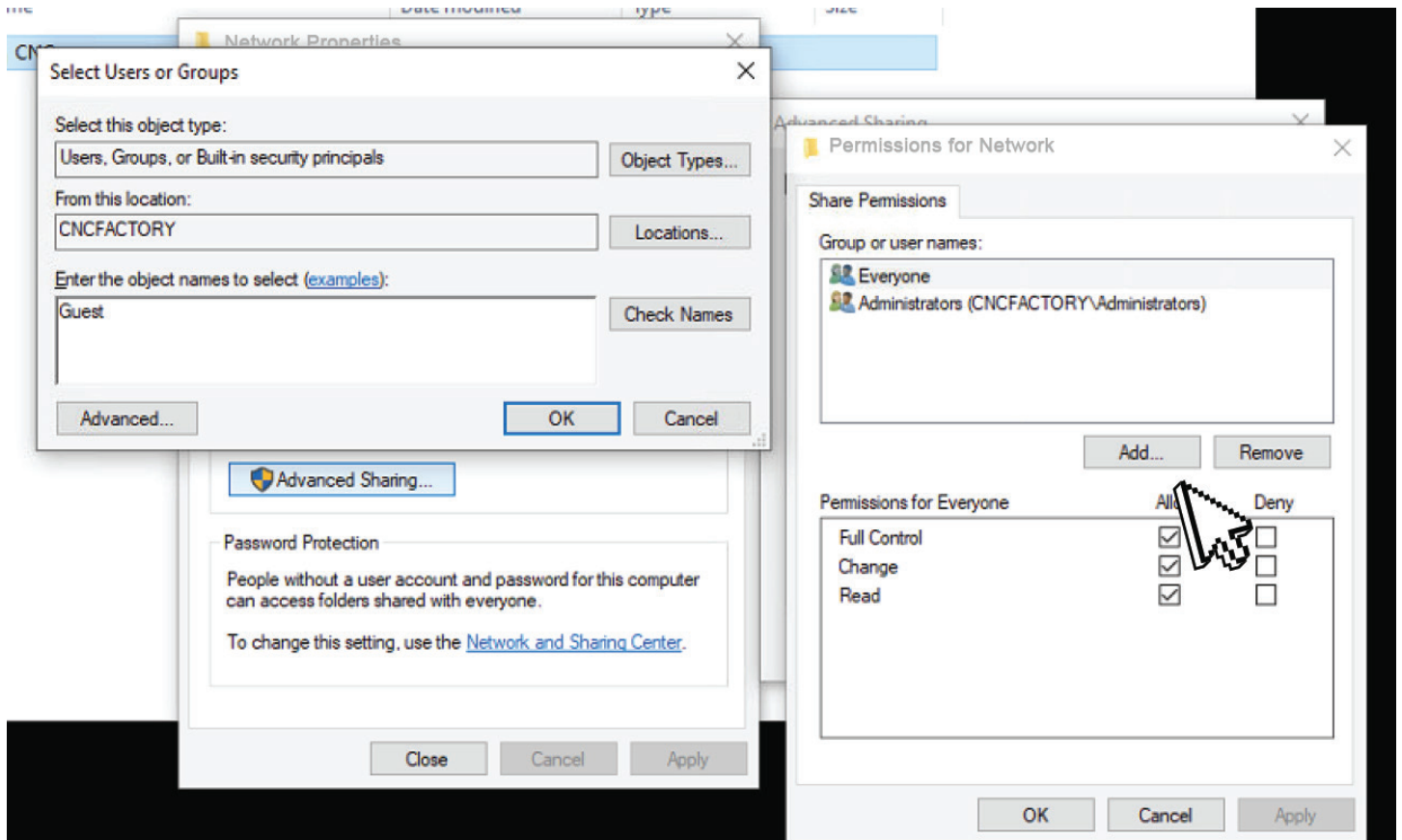
15. Once the Guest account has been added, click on the “Permission Level” and set it to “Read/Write” and then, at the bottom of that window, click on [Share].



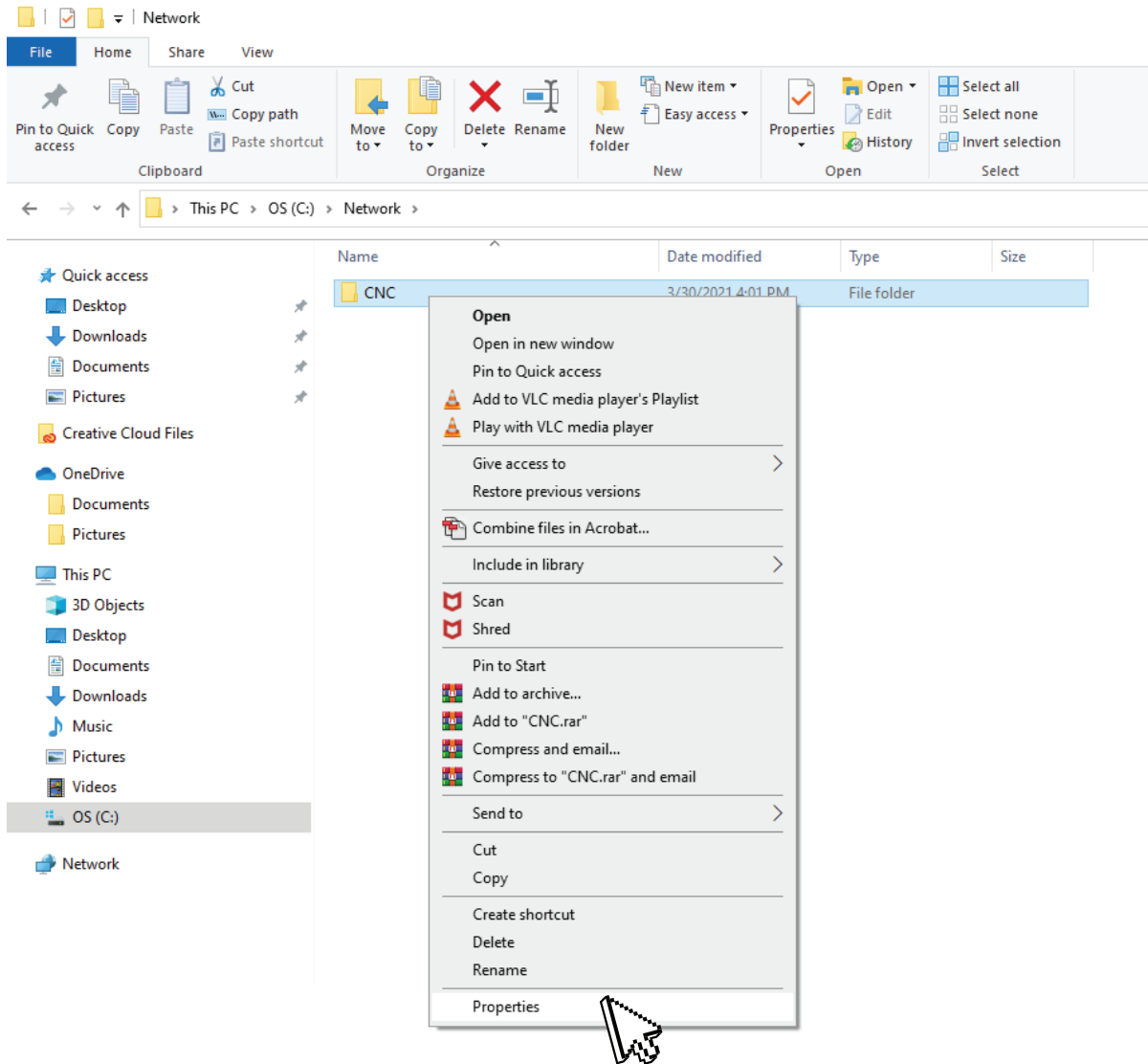
16. Next, back on the Network Properties window, click on [Advanced Sharing]. Once the Advanced Sharing window appears, tick on the “Share this Folder” box. Then, click on the [Permissions] button.



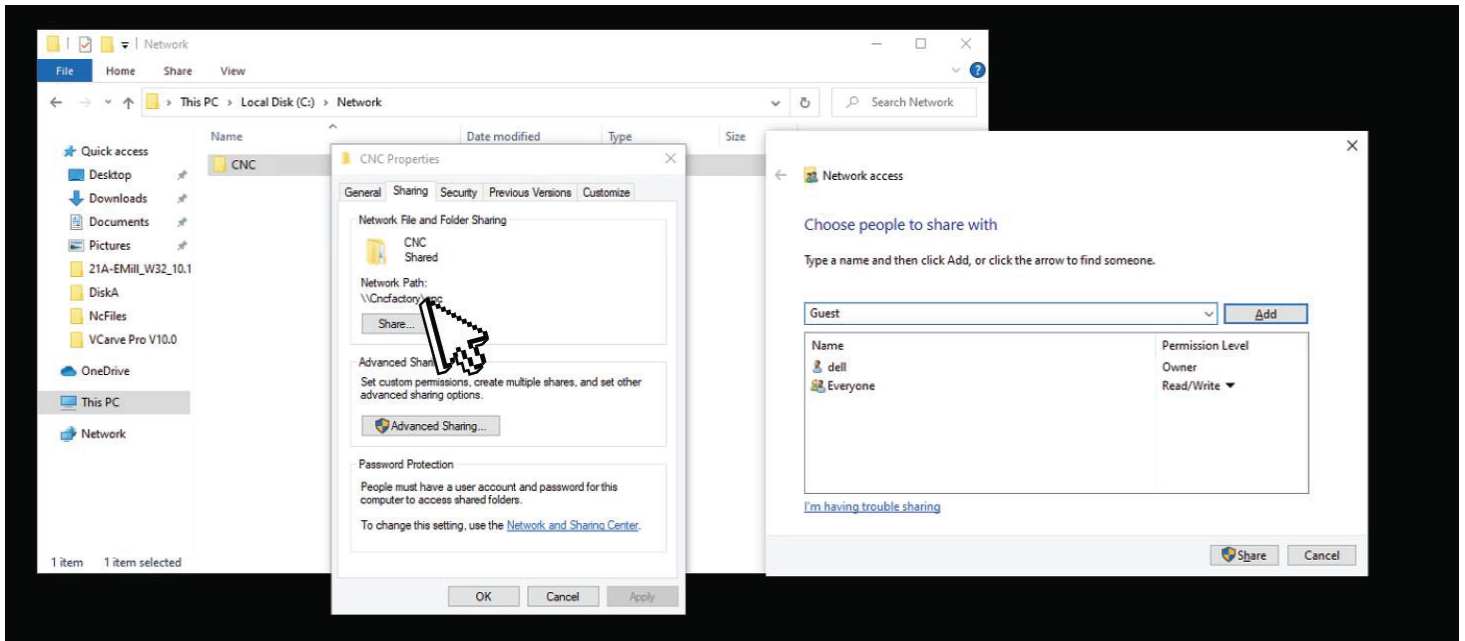
17. The Permissions for Network window will appear. Click [Add] to add a Guest user. The Select Users or Groups window will then appear (shown on the left). Type "Guest" on the bottom field and click [OK]. After, select the Guest user from the "Share Permissions" window and tick off all the boxes under "Allow" to provide full permission to the Guest account. Then click [Apply].



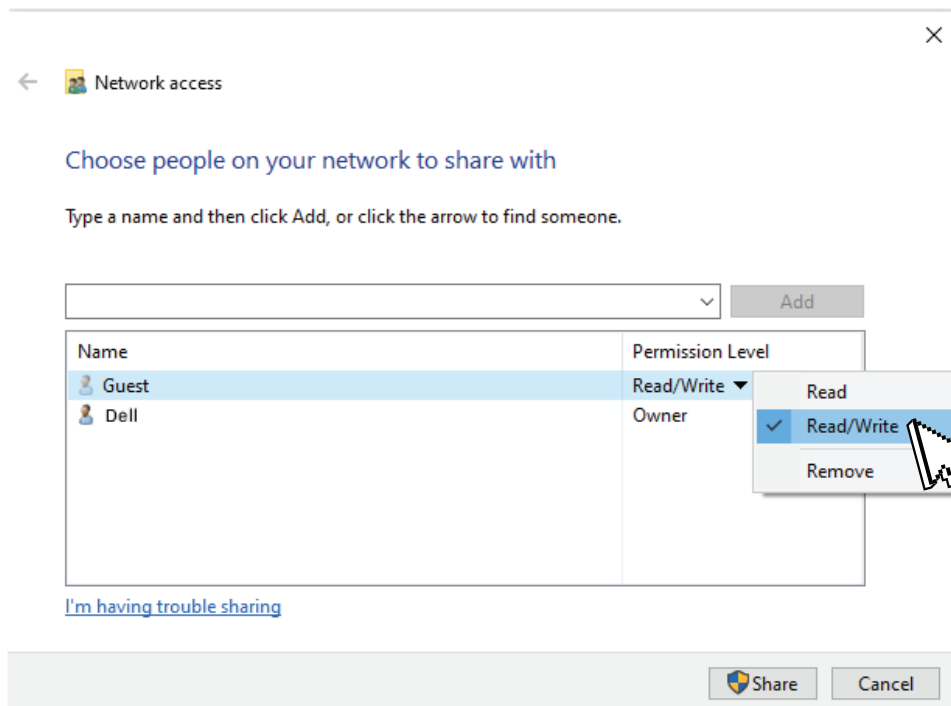
18. After, go back to the C Drive again and click on the Network folder. Inside the Network folder is a "CNC" folder. You will be doing the **exact same things you just did for the Network folder**. Right-click on the CNC folder and, at the bottom, select [Properties].



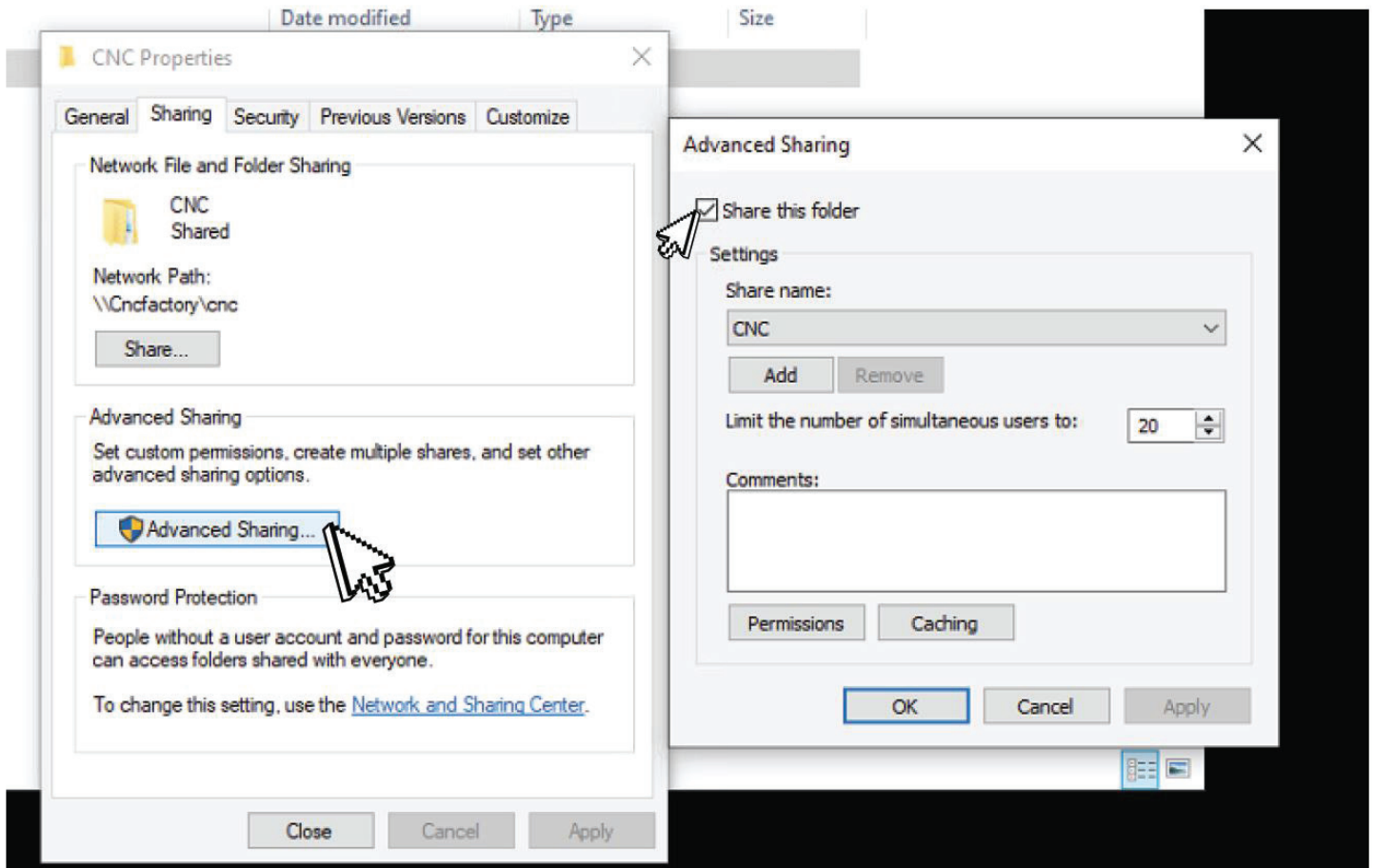
19. The CNC Properties window will appear. Go to the “Sharing” Tab and click on [Share]. Another pop-up window will appear like the one on the right below. Make sure there is a Guest account. If not, you can create one by typing “guest” on the field, and then clicking on [Add].



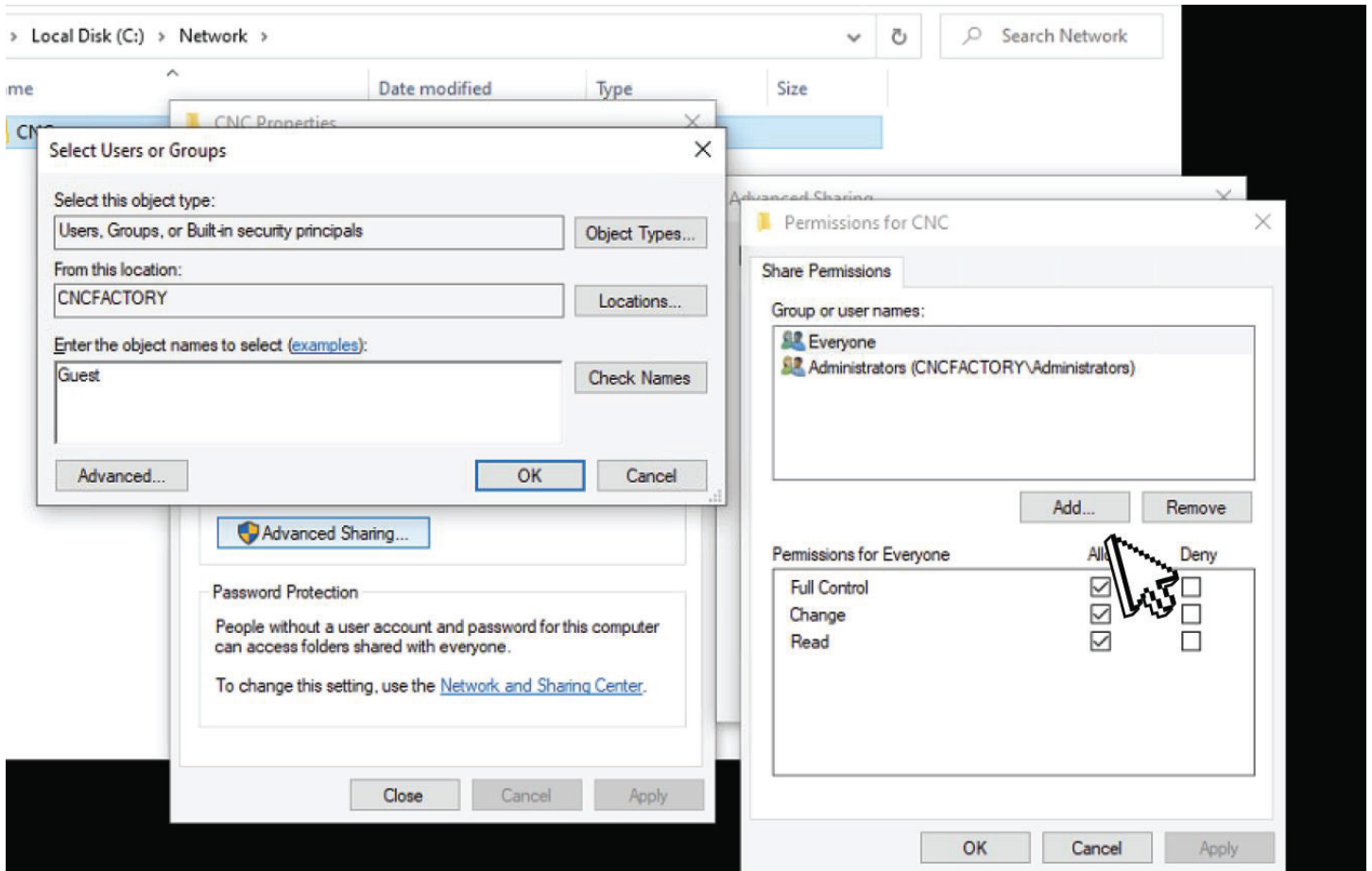
20. Once the Guest account has been added, click on the “Permission Level” and set it to “Read/Write” and then, at the bottom of that window, click on [Share].



21. Next, back on the CNC Properties window, click on [Advanced Sharing]. Once the Advanced Sharing window appears, tick on the "Share this Folder" box. Then, click on the [Permissions] button.



22. The Permissions for CNC window will appear. Click [Add] to add a Guest user. The Select Users or Groups window will then appear. Type "Guest" on the bottom field and click [OK]. After, select the Guest user from the "Share Permissions" window and tick off all the boxes under "Allow" to provide full permission to the Guest account. Then click [Apply].



23. Next, restart your Controller and CNC machine for the changes to take effect.

24. Finally, after restarting and before starting the CNC program, locate the CNC program shortcut (which can be in your C drive or your desktop). Right-click on it and select "Run as administrator". Your machine should run smoothly at this point.

